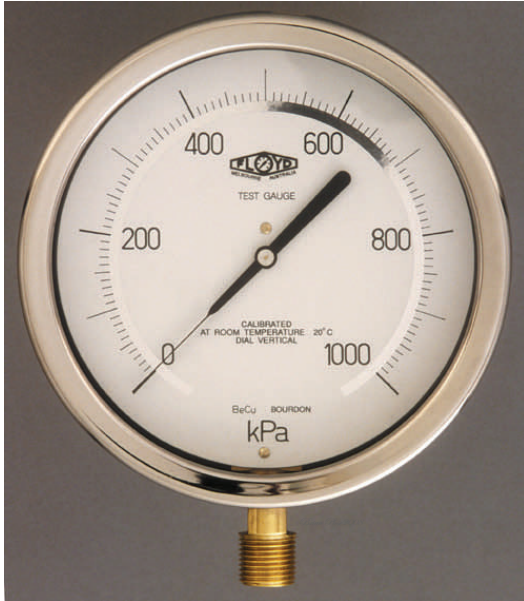


TEST GAUGES



**DIRECT MOUNT
P/N DBTG15015**

Floyd precision test gauges manufactured to the highest standard in quality. Used for the testing of industrial gauges or equipment of the same standard. For quality control testing requirements it is not always necessary to use a primary standard such as a dead weight tester, therefore a secondary standard such as a test gauge can be used, being a more convenient and economical method of testing.

- TYPE:** DBTG - Direct mount bottom entry
 SBTG - Surface mount bottom entry (back flange)
 PRTG - Panel mount rear entry (“U” clamp fixing)
 FRTG - Flush mount rear entry (“3” hole fixing front flange)

DIAMETER: - 150mm, 200mm and 250mm

ACCURACY: - +/- 0.25% of full scale deflection

DIAL TYPE: - Mirror to reduce anti parallax error

RANGES: - Vacuum –100 –0 kPa up to 100,000 kPa
 Also available in other pressure units

CONNECTIONS: - Bottom entry 1/2” BSPP
 Rear entry 3/8” BSPP

CERTIFICATION: - Floyd test certificate traceable to our NATA certified testing equipment or alternatively a fully endorsed NATA test certificate

P/N Example

TYPE	DIAMETER	CODE
DBTG	150mm	15

RANGE	CODE
-100-0 kPa	01
-100-0-150 kPa	03
-100-0-300 kPa	04
-100-0-500 kPa	05
-100-0-900 kPa	06
0-100 kPa	09
0-160 kPa	10
0-250 kPa	11
0-400 kPa	12
0-600 kPa	13
0-800 kPa	14
0-1000 kPa	15
0-1600 kPa	16
0-2500 kPa	17
0-4000 kPa	18
0-6000 kPa	19
0-8000 kPa	20
0-10000 kPa	21
0-16000 kPa	22
0-25000 kPa	23
0-40000 kPa	24
0-60000 kPa	25
0-80000 kPa	26
0-100000 kPa	27

STANDARD DIVISIONS

PRESSURE RANGE

DIVISIONS ON 150mm

DIVISIONS ON 200/250mm

	20	25	30	40	50	60	80	100	120	150	160
DIVISIONS ON 150mm	100	125	150	80	100	120	160	100	120	150	160
DIVISIONS ON 200/250mm	200	250	300	200	250	120	320	200	240	300	320